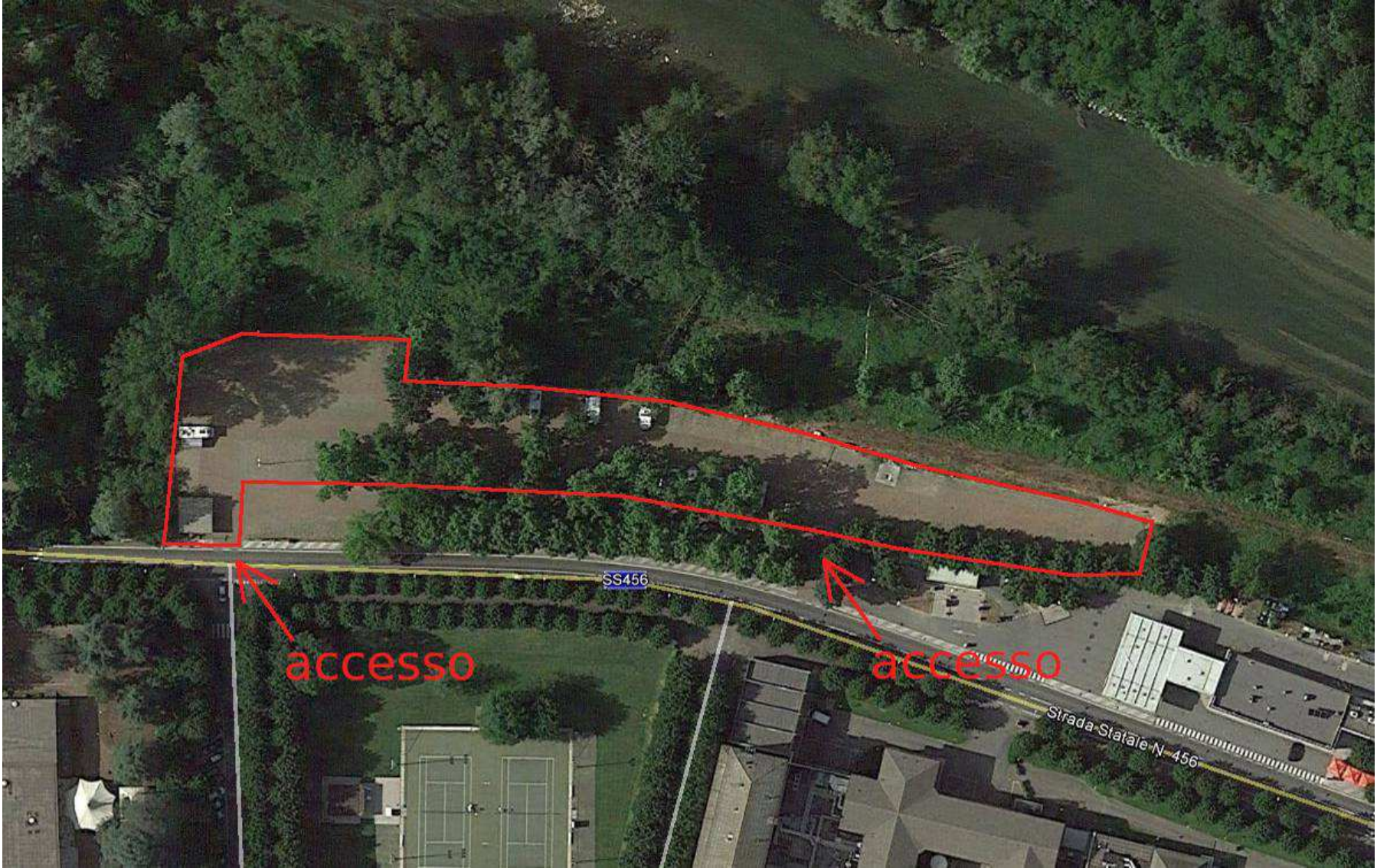




COMUNE DI ACQUI TERME

INDIVIDUAZIONE AREA SOSTA PER AUTOCARAVAN SITA IN VIALE EINAUDI (P.ZA SOCIETA' OPERAIA DI MUTUO SOCCORSO)



accesso

accesso

SS456

Strada Statale N-456

VISTE FOTOGRAFICHE



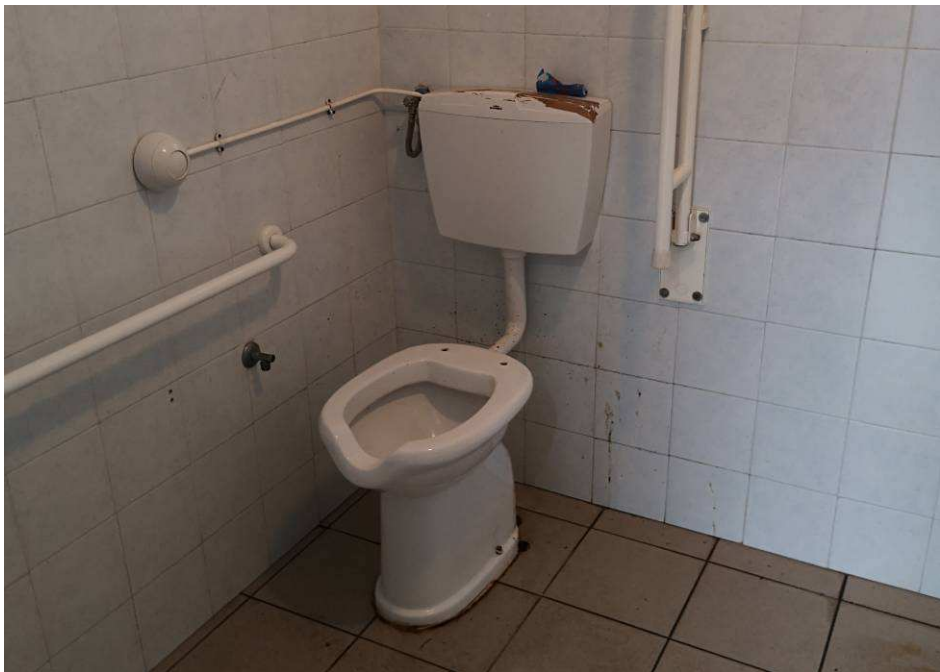
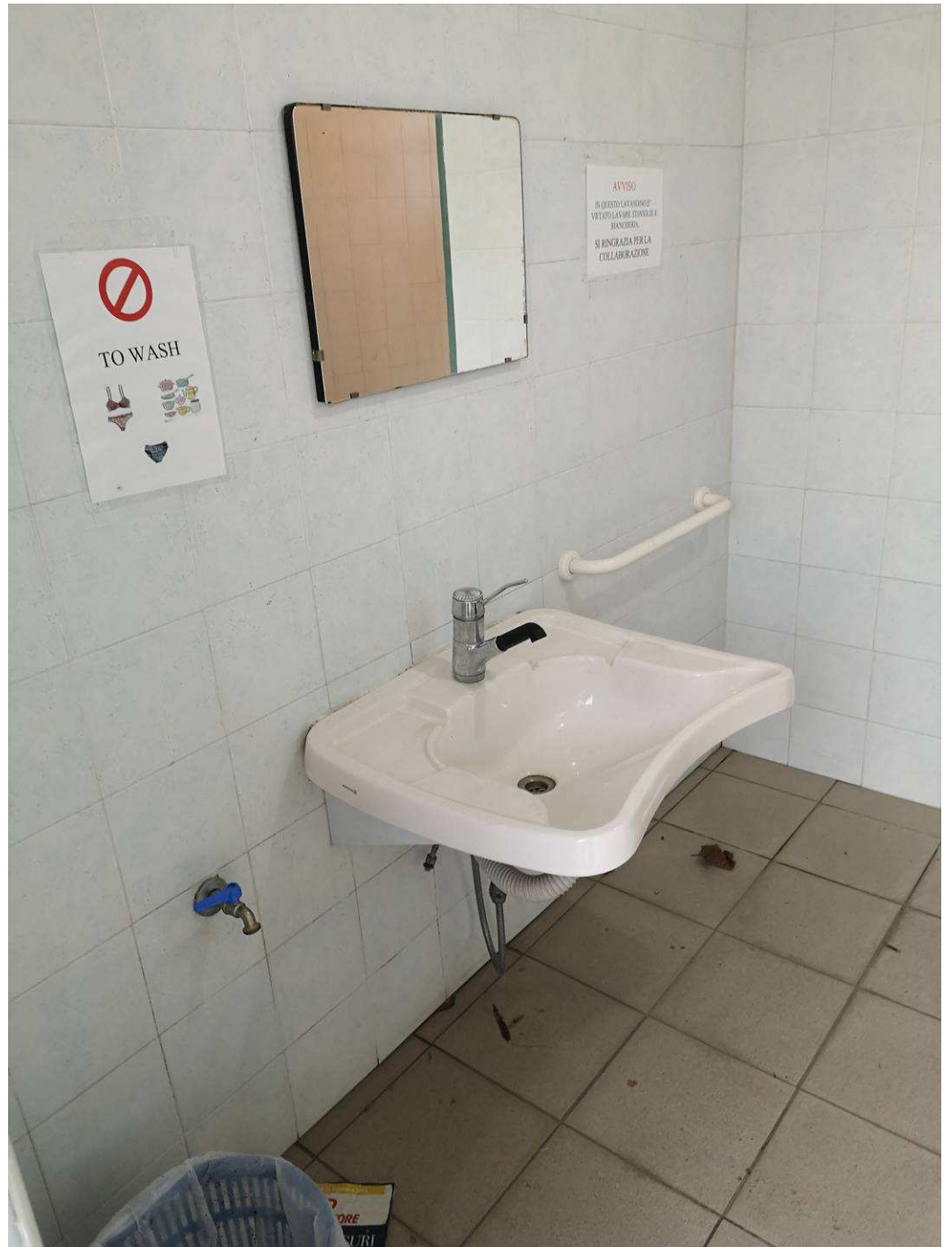


CAMPER SERVICE



MODULO SERVIZI IGIENICI





PLANIMETRIA MODULO SERVIZI IGIENICI

